



ITALCLEAN STOCK BROCHURE
Liberty and Premium dry cleaning series

Italclean are manufactured to the highest standards using advanced technology and superior quality components for high performance and reliability, ensuring optimal drycleaning everytime. Our complete range of dry cleaning machines meet and surpass the most stringent of environmental and ecological regulations coupled with energy efficiency for low running cost.

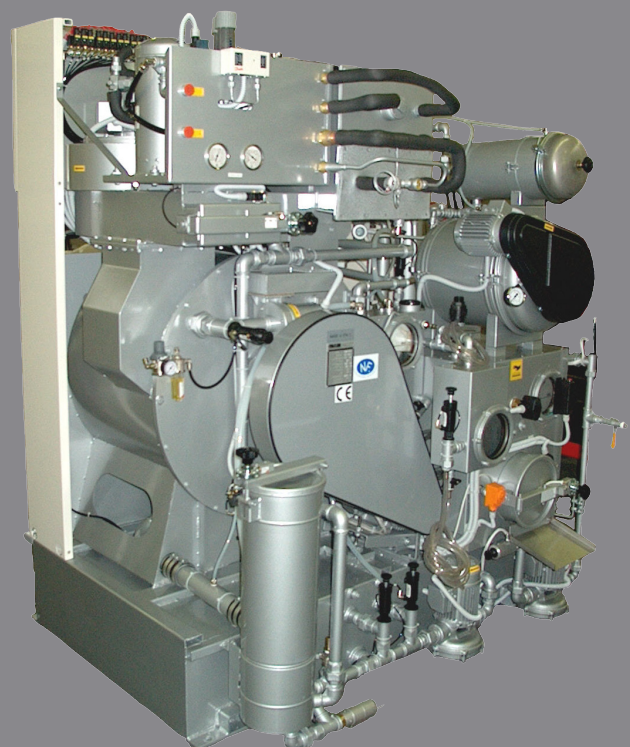
Liberty range is compact with two tanks especially designed for space saving without compromising on performance or quality.

Premium range with three tanks are designed for high capacity loads and professional use also available in industrial capacities.

- Stainless steel drum, still, solvent tanks, button trap, filter housings, water separators, air channels, etc.
- Two or three stainless steel automatic self cleaning tank of high capacity
- Nylon self cleaning filters.
- Inverter drum speed control for high extract, also the best way to treat delicates, leather, fur etc.
- Still level control for energy saving and oven fill protection.
- Thermal overload protection with relays on all motors
- Closed circuit system with Copeland compressors, most efficient and silent running scroll compressor.
- Solvent safety containment tray for under machine.
- Electronic pump system for automatic cleaning and removal of still sludges.
- Door opening de-odorizing fan with active carbon filtration system.
- Danfoss water saving valves as standard
- Stainless steel double water separation for ecological elimination of contact water.
- Security locking system on all doors with pneumatic and micro locks.

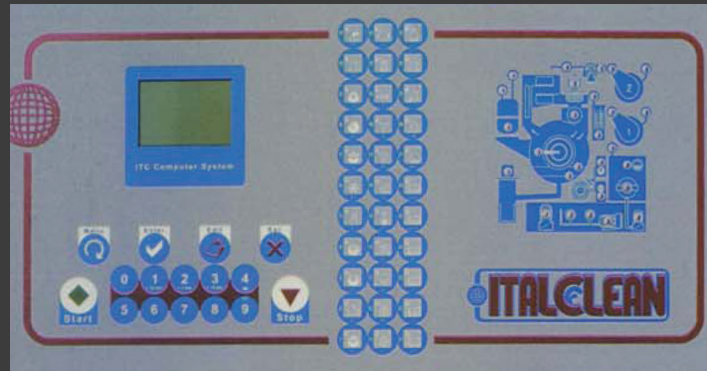
Optional extras

- Dry control with automatic drying sensor.
- In line solvent cooling system by refrigeration.
- Rear drum automatic cleaning system.
- ACTIVA solvent vapour absorber with self generating active carbons.



Ultimate generation multilingual computer with automatic and/or manual control.

Wide display to follow each program step by step, cycles counter, diagnostic display with visual and sound alarm and possible internet connection. Friendly manual programming with 25 standard programs (or customised to the customer's desire) which could be doubled with a memory card.



granting you effectiveness and flexibility.

